

 Kawasaki



Kawasaki **900** super **4**

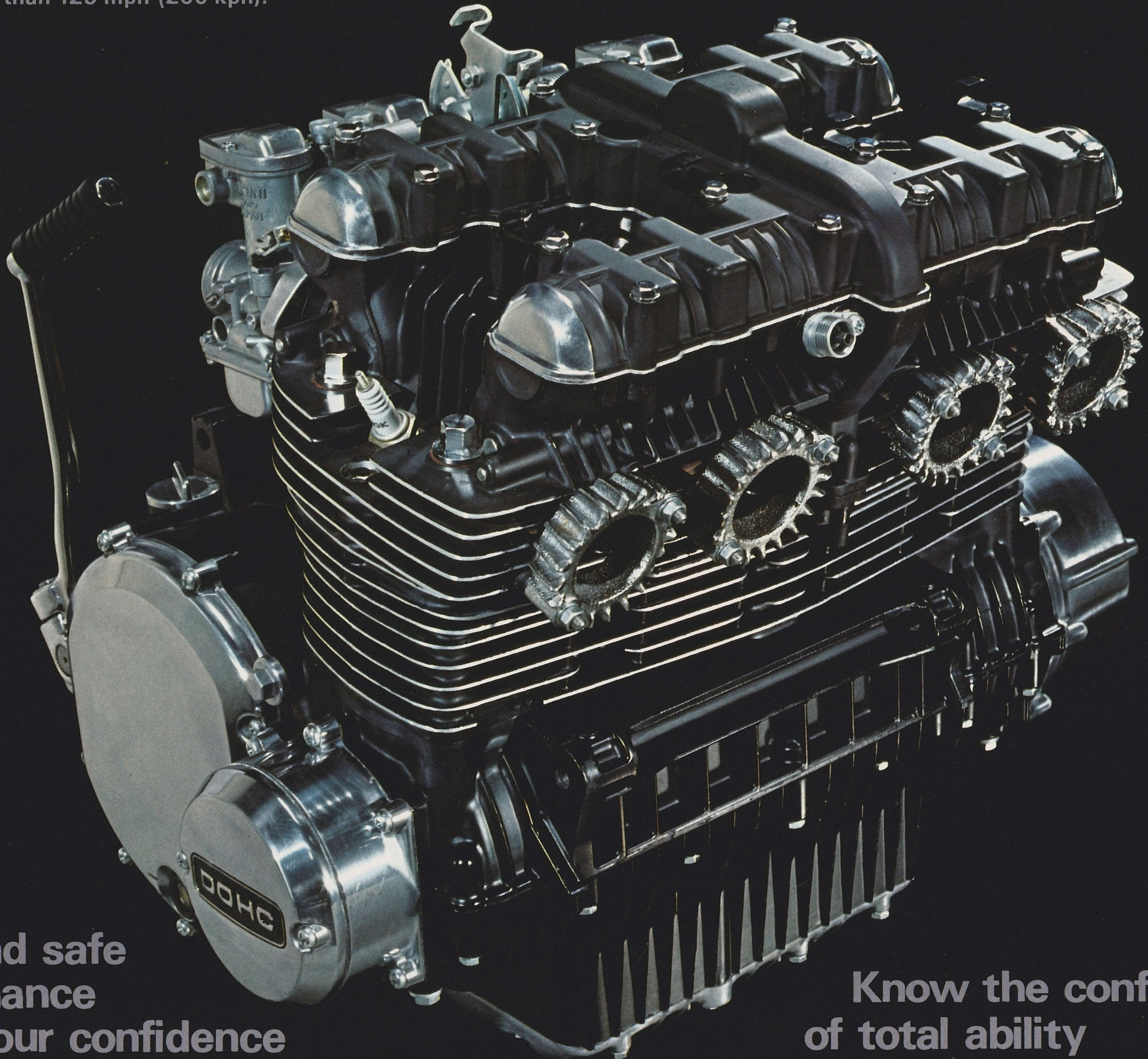


4-stroke, 4-cylinder DOHC engine. 82 hp. Over 125 mph (200 kph). SS 1/4 mile (400m): 12.0 sec.

Enjoy the confidence of having awesome power

The Kawasaki 900 super4 is more than a sports machine and it's more than a touring machine, it's a whole new kind of motorcycle: a super sports tourer. It packs a compact, in-line transversely mounted 4-stroke, 4-cylinder 900 cc engine with double overhead camshafts and electric start. And it packs more power than any production machine: 82 hp at 8,500 rpm. That kind of power translates into breath-taking acceleration: standing start quarter mile (400 metres) in 12 seconds flat, and a top speed of more than 125 mph (200 kph).

The good thing about this awesome power is you can just as easily trigger instant engine response as a safety factor as you can for outright performance. The power comes on strongly and smoothly in every speed range. It's all muscle but you can manage it comfortably in city traffic as safely as on the open road.



All-round safe performance earns your confidence

The Kawasaki 900 super4 has an anti-pollution system which cycles blow-by gas through a PCV (Positive Crankcase Ventilation) system to reduce hydrocarbons by 40%. Exhaust noise is also cut to a "good neighbour" level and even mechanical noise from the engine is reduced. Also, the engine is ready for low and no-lead gasoline with sintered alloy valve seats which reduce wear and maintain engine efficiency and performance.

Performance is also handling and braking. The Kawasaki 900 super4 has a race-proven double cradle frame and co-ordinated telescopic forks and rear suspension which give excellent high speed stability and cornering characteristics enhanced by the best choice in tyres. The brakes are a big disc up front and a large drum brake at rear. Together, they give you all the super stopping security you need.

Know the confidence of total ability

The positive, 5-speed constant mesh gearbox is a joy to use. Flexible. And top is like an overdrive. Cruising at 70 mph (112 kph) in fifth means 4,500 rpm on the tachometer. The engine's loafing. And it's easy on fuel.

The chain is the largest, strongest unit that can be fitted on a motorcycle. And to make it last longer, Kawasaki created an automatic chain oiler. Clean engine oil from a separate tank feeds into the oil pump and drive shaft and squirts directly onto the chain links every time there's a change in speed and there's tension on the chain.

The big, black-faced, easy-to-read speedometer and tachometer and indicators are assembled in one neat instrument panel with the ignition switch in the centre. One glance gives complete information—day or night.

Although the Kawasaki 900 super4 is a sophisticated design, it's well thought out for easy serviceability. All parts can be exchanged, except crankshaft and transmission, with the engine on the frame. Kawasaki engineers tried to think of everything to make the Kawasaki 900 super4 as much pleasure to own as it is to ride.

Kawasaki 900 super4

an expression of confidence

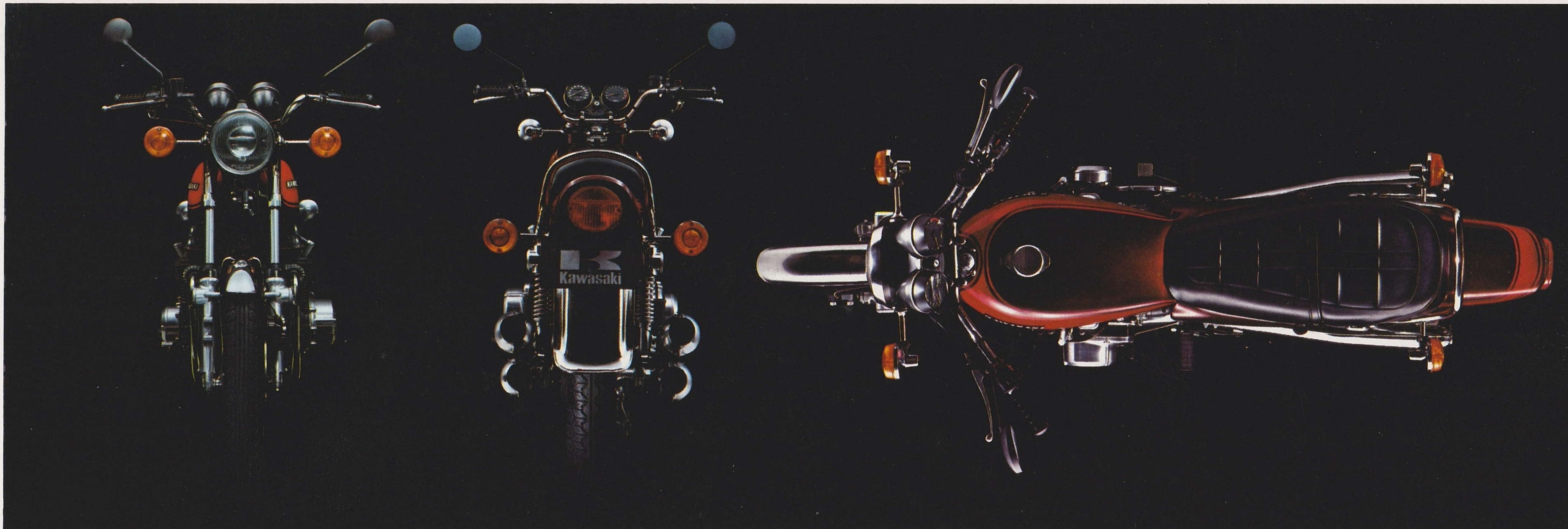


We created the Kawasaki 900 super4 for experienced riders who have the confidence to move up to a bigger, stronger and safer motorcycle.

And we are confident that the man who owns one will use its power and performance with common sense and courtesy.

The Kawasaki 900 super4 is not everyone's motorcycle because not everyone demands ultimate performance.

But if you know what motorcycling is about, this is the machine you must ride and know.



SPECIFICATIONS

PERFORMANCE

Maximum speed	Over 125 mph (200 kph)
Acceleration	SS 1/4 mile (400 m): 12.0 sec.
Climbing ability	30°
Braking distance	36 ft/31 mph (11 m/50 kph)
Minimum turning radius	98.5 in. (2.5 m)
Fuel consumption	48 mile/Imp. gal. @70 mph (17 km/l @ 113 kph)

ENGINE

Type	4-stroke, 4-cylinder, DOHC, transverse, in-line, air cooled.
Displacement	903 cc (55.1 cu.in.)
Bore and stroke	2.6 x 2.6 in. (66 x 66 mm)
Compression ratio	8.5 : 1
Maximum horsepower	82 hp/8,500 rpm
Maximum torque	54.3 ft-lb/7,000 rpm (7.5 kg-m/7,000 rpm)
Ignition system	Battery and coil
Starting system	Electric starter and kick
Lubrication	Wet sump

TRANSMISSION

Type	5-speed, constant mesh, return shift
Clutch	Wet, multi-disc

DIMENSIONS

Length, overall	88.5 in. (2,250 mm)
Width, overall	32.3 in. (820 mm)
Height, overall	46.3 in. (1,175 mm)
Wheelbase	58.7 in. (1,490 mm)
Ground clearance	6.3 in. (160 mm)
Dry weight	506 lbs. (230 kg)
Fuel tank capacity	4.0 Imp. gal. (18 litres)

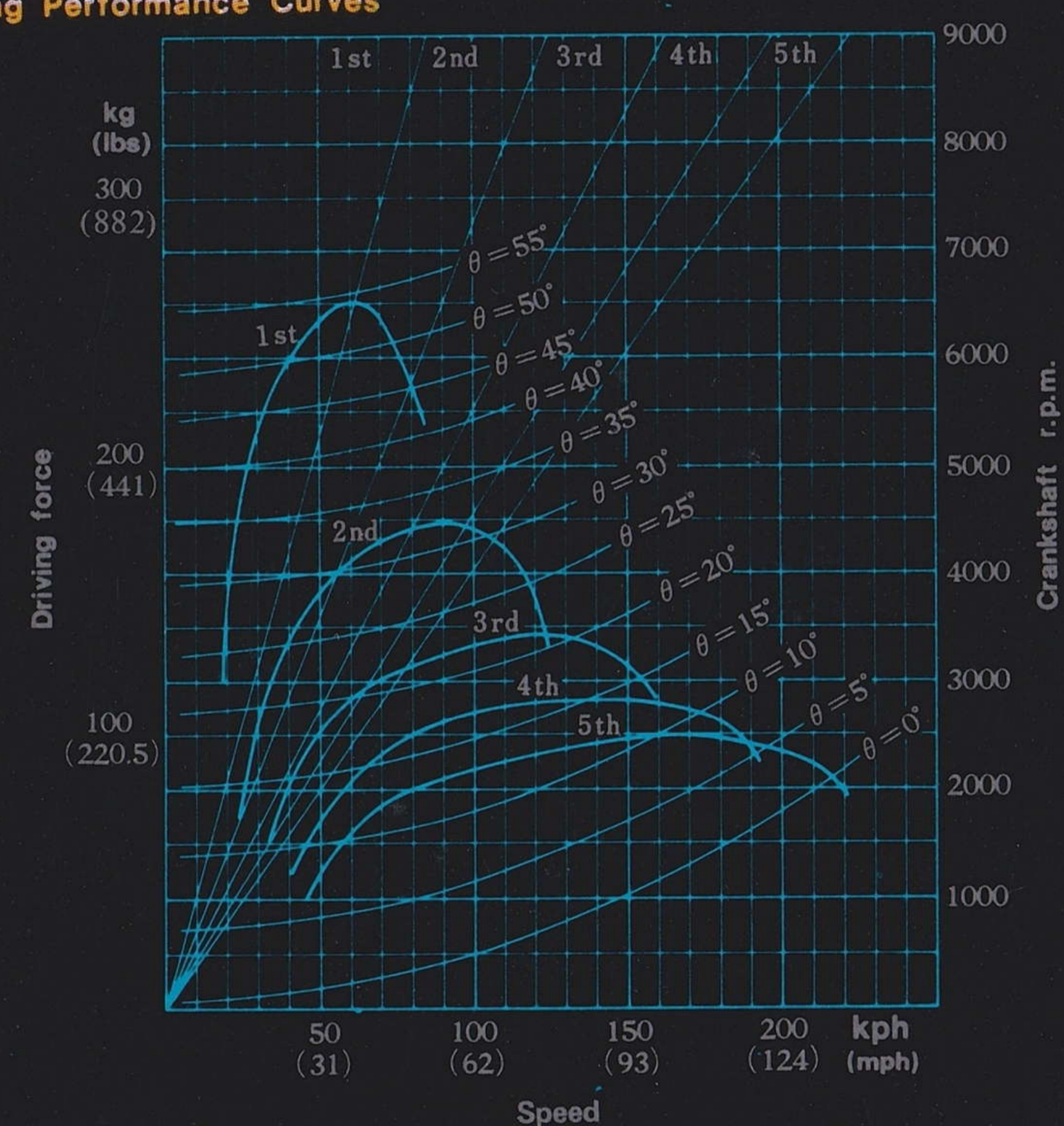
FRAME

Type	Tubular, double cradle
Suspension: Front	Telescopic fork
Rear	Swing arm
Tyres: Front	3.25 - 19 4PR
Rear	4.00 - 18 4PR

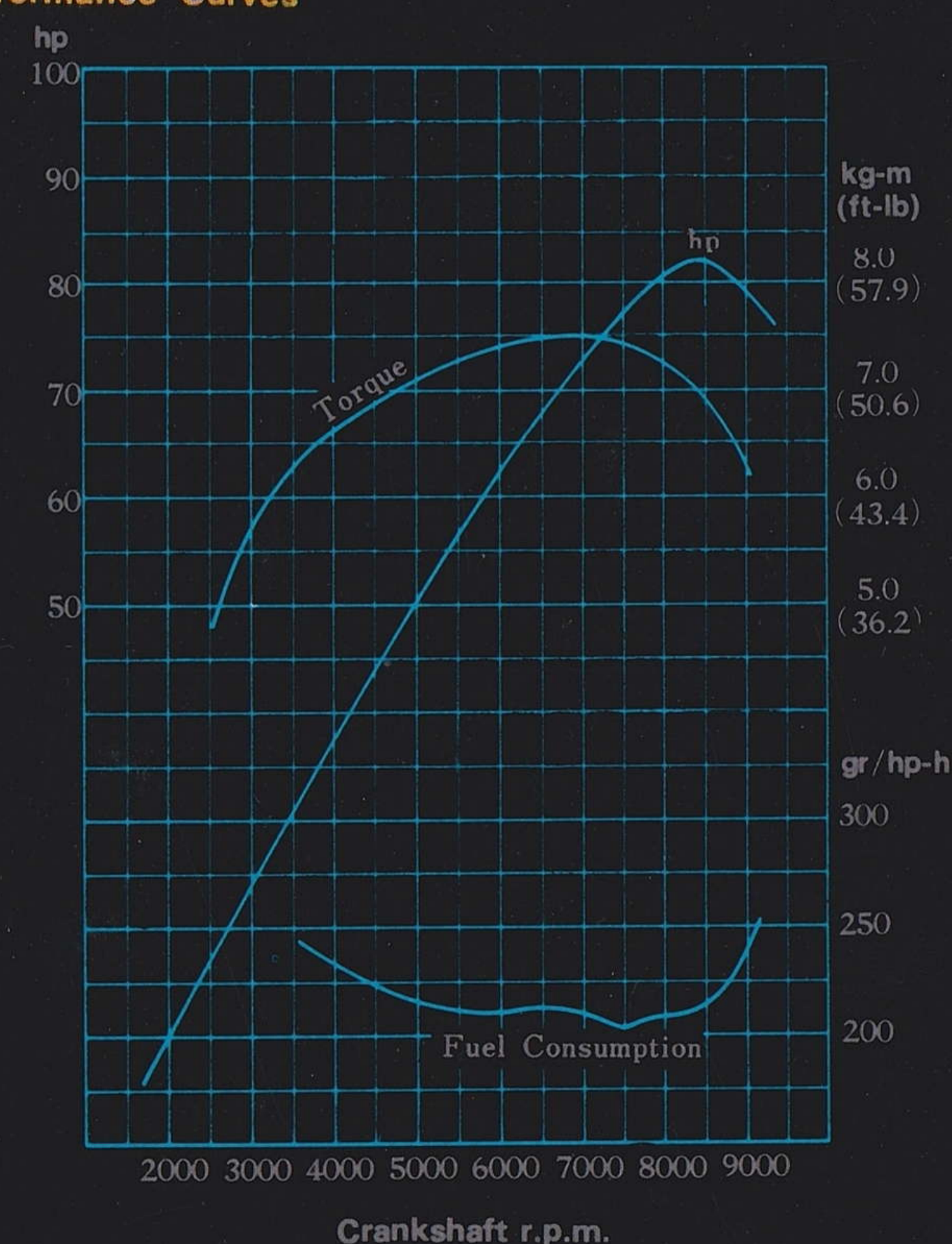
Specifications subject to change without notice.

PERFORMANCE CURVES

Running Performance Curves



Engine Performance Curves



Kawasaki puts it all in your hands.

KAWASAKI
HEAVY INDUSTRIES, LTD.
MOTORCYCLE DIVISION